

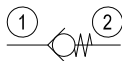
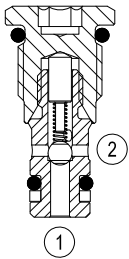
RE 18318-88/05.13 1/2  
 Replaces: RE 18318-88/11.12

## Check, poppet type

## Special cavity

VUCN-04A

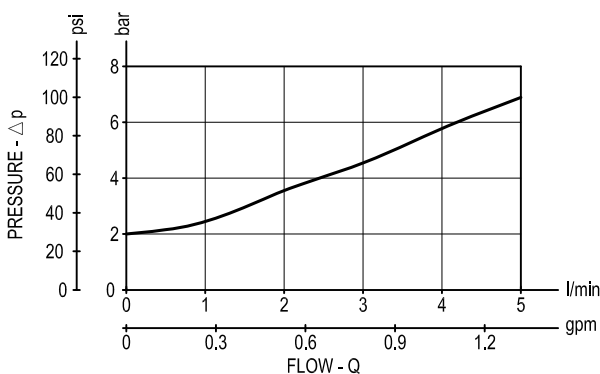
04.31.31.00.54 - Z



### Description

When pressure at 1 rises above the spring bias pressure, the poppet is lifted and flow allowed from 1 to 2. The valve is closed (checked) from 2 to 1. Precision machining and hardening processes allow virtually leak-free performance in the checked condition.

### Performance

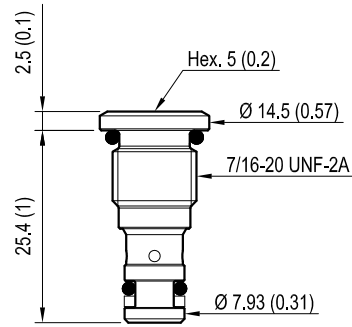


### Technical data

Max. operating pressure	bar (psi)	350 (5000)
Max. flow	l/min. (gpm)	4 (1)
Max. internal leakage	drops/min.	5
Fluid temperature range	°C (°F)	-30 to 100 (-22 to 212)
Installation torque	Nm (ft-lbs)	10-12 (7-9)
Weight	kg (lbs)	0.013 (0.03)
Special cavity		CA-04A-2N see data sheet RE 18325-75
Seal kit (*)	code material no.	RG04S2010520100 R930003786
Fluids		Mineral-based or synthetics with lubricating properties at viscosities of 5 to 800 mm <sup>2</sup> /s (cSt)
Filtration		Nominal value max. 10µm (NAS 8) ISO 4406 19/17/14
Installation		No restrictions
Other Technical Data		See data sheet RE 18350-50

(\*) Only external seals for 10 valves

### Dimensions



[mm (Inches)]

### Ordering code

04.31.31.00	54	Z	00	*
-------------	----	---	----	---

Check, poppet type

Special cavity, CA-04A-2N

Series 0/A to L  
unchanged performances and dimensions

Version and options standard

	SPRINGS
	Cracking pressure bar (psi)
= 00	0.5 (7.3)
= 02	2 (29)

Type	Material number
043131005400000	R930008160
043131005402000	R930000494

Type	Material number