

RE 18319-80/09.09

1/2

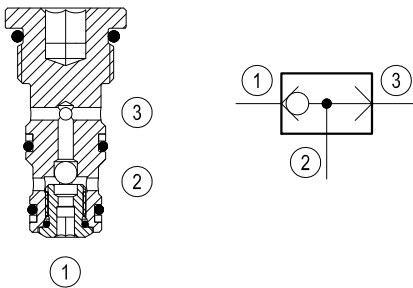
Replaces: RE 00162-02/01.06

Directional poppet type, shuttle

Common cavity, Size 08

SELB-08A

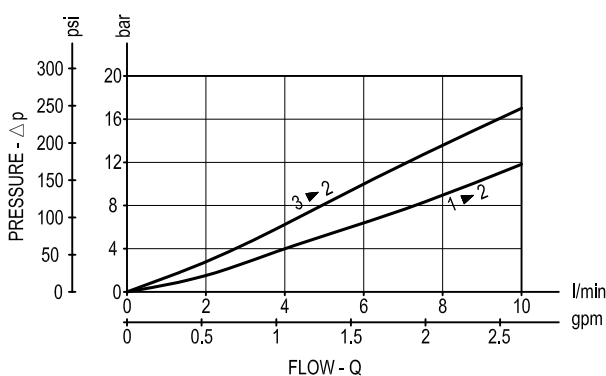
04.94.05.00.56.00



Description

The single ball shuttle allows flow from the higher pressure of two work ports 1 and 3 to the 2 port.

Performance

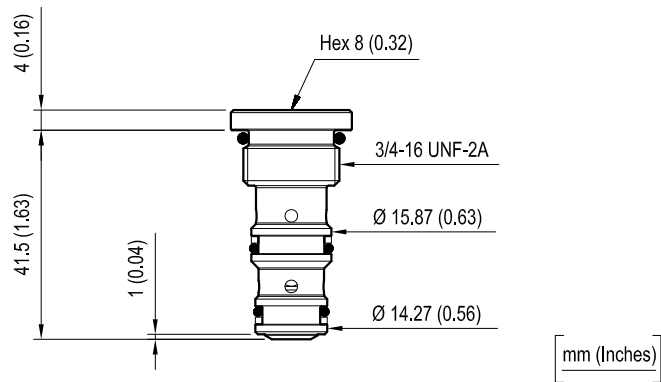


Technical data

Max. operating pressure	bar (psi)	350 (5000)
Max. flow	l/min. (gpm)	See performance graph
Nominal size		DN 3
Max. internal leakage	drops/min.	15
Fluid temperature range	°C (°F)	-30 to 100 (-22 to 212)
Installation torque	Nm (ft-lbs)	34-41 (25-30)
Weight	kg (lbs)	0.06 (0.13)
Cavity		CA-08A-3N see data sheet RE 18325-70
Line bodies		See data sheet RE 18350-50
Seal kit (*)	code material no.	RG08A3010520100 R930000861
Fluids		Mineral-based or synthetics with lubricating properties at viscosities of 5 to 500 mm ² /s (cSt)
Filtration		Nominal value max. 10µm (NAS 8) ISO 4406 19/17/14
Installation		No restrictions
Other Technical Data		See data sheet RE 18350-50

(*) Only external seals for 10 valves

Dimensions



Ordering code

04.94.05.00	56	00	00	*
-------------	----	----	----	---

Directional poppet type, shuttle

Series 0/A to L
unchanged performances and dimensions

Version and options standard

Common cavity, Size 08

Type	Material number
049405005600000	R901161981

Type	Material number