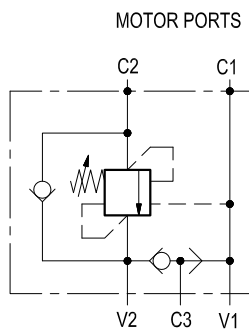


Single counterbalance with brake release port for winches, flangeable to motor



VBSO-SE-FA-30

05.45.71 - X - Y - Z



Description

When pressure at V2 rises above the spring bias pressure, the check seat is pushed away from the piston and flow is allowed from V2 to C2. When load pressure at C2 rises above the pressure setting, the direct operated, differential area, relief function is activated and flow is relieved from C2 to V2. With pilot pressure at V1-C1, the pressure setting is reduced in proportion to the stated ratio of the valve, until opening and allowing flow from C2 to V2. The spring chamber is drained to V2, and any back-pressure at V2 is additive to the pressure setting in all functions. Through port C3, an incorporated shuttle valve directs either V1 or V2 line pressure to the spring actuated brake for brake opening.

Technical data

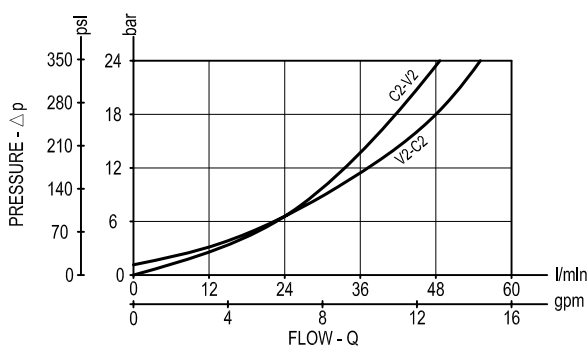
Hydraulic

| | | |
|--------------------|-------------|------------------|
| Operating pressure | bar (psi) | up to 210 (3000) |
| Max. flow | l/min (gpm) | 60 (16) |

Flangeable on SAUER-DANFOSS orbital motors OMS series.

Relief setting: at least 1.3 times the highest expected load. In addition, both the relief setting and the pilot ratio must be determined also in order to achieve building-up of pilot pressure in V1 high enough to release the brake prior to any valve opening from C2 to V2.

Performance

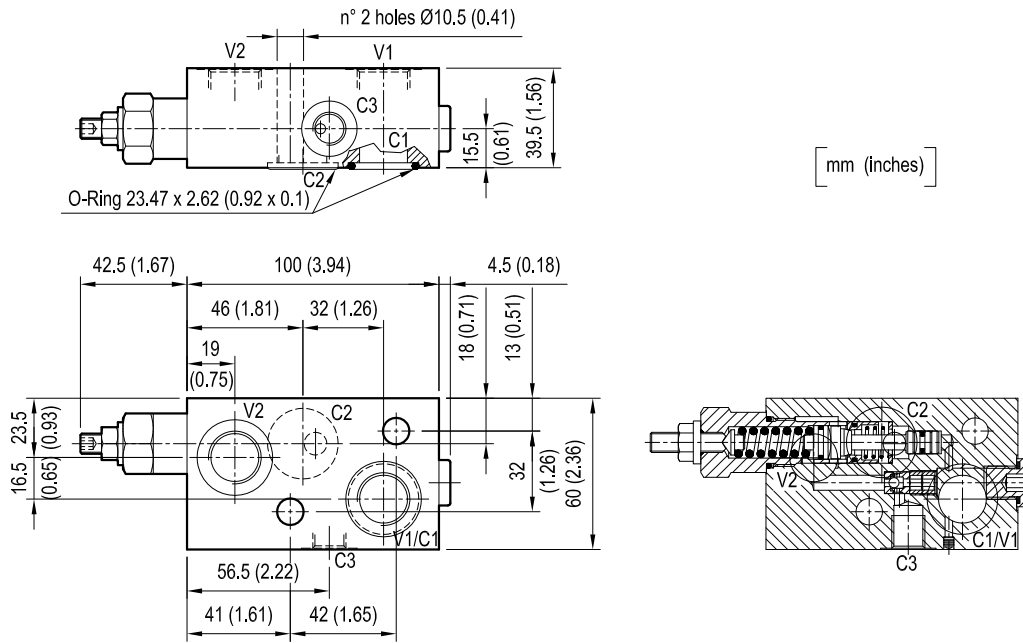


General

| | | |
|--|----------------------------|----------------------------------|
| Manifold material | Aluminium | |
| Note: aluminium bodies are often strong enough for operating pressures exceeding 210 bar (3000 psi), depending from the fatigue life expected in the specific application. If in doubt, consult our Service Network. | | |
| Weight | kg (lbs) | 0.7 (1.54) |
| Fluid temperature range | °C (°F) | between -30 (-22) and +100 (212) |
| Other technical data | see data sheet RE 18350-50 | |

Note: for applications outside these parameters, please consult us.

Dimensions



Ordering code

| | | | |
|-----------------|----------|----------|----------|
| 05.45.71 | X | Y | Z |
|-----------------|----------|----------|----------|

Single counterbalance with brake release port for winches, flangeable to motor

Pilot ratio

= 03 4.2:1

| Port sizes | V1-V2 | C2 | C3 |
|------------|-------|------------|-------|
| = 03 | G 1/2 | Ø 9 (0.35) | G 1/4 |

SPRINGS

| | Adj. pressure range bar (psi) | Pres. increase bar/turn (psi/turn) | Std. setting Q=5 (l/min.) bar (psi) |
|------|-------------------------------|------------------------------------|-------------------------------------|
| = 35 | 100-350 (1450-5000) | 138 (2001) | 350 (5000) |

Tamper resistant cap code 11.04.23.002 R930000752



| Type | Material number |
|-----------------|-----------------|
| 05457103033500A | R930002092 |
| | |
| | |
| | |
| | |
| | |
| | |
| | |
| | |
| | |

| Type | Material number |
|------|-----------------|
| | |
| | |
| | |
| | |
| | |
| | |
| | |
| | |
| | |
| | |