

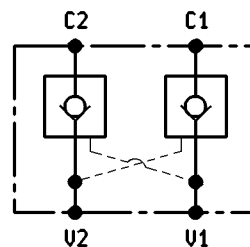
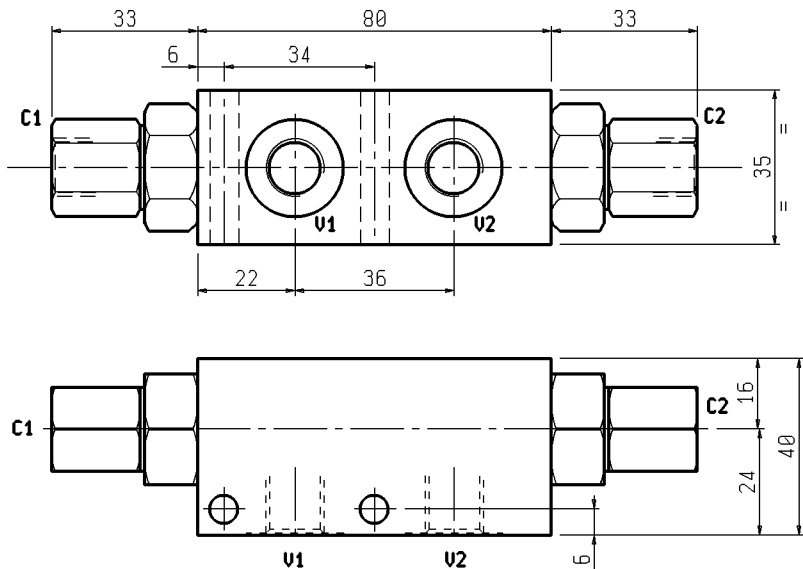
DUAL PILOT OPERATED CHECK VALVES

USO-DE-L-14-MP-9:1

05.53.03.37.09.00.00.0

DENOMINAZIONE VALVOLA
VALVE DENOMINATION

CODICE D'ORDINAZIONE
ORDERING CODE

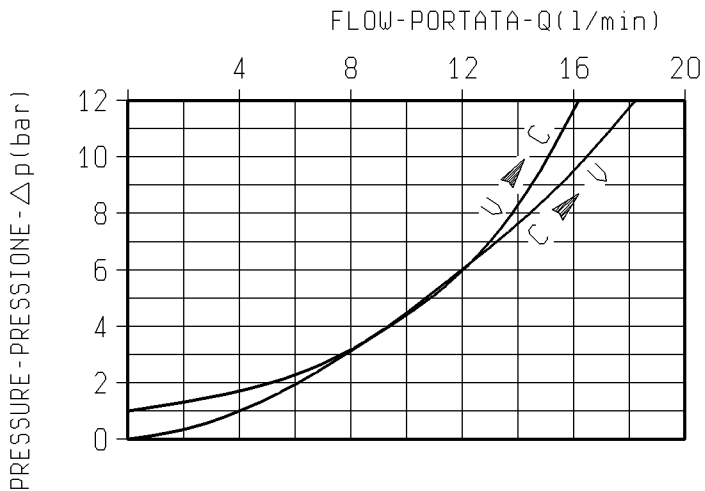


Rapporto di pilotaggio 9 : 1

Pilot ratio 9 : 1

Pressione di lavoro max 350 bar / Portata max vedi diagramma

Max working pressure 350 bar / Flow see performance graph



GUARNIZIONE SUL PISTONE DI PILOTAGGIO O-RING ON PILOT PISTON
senza guarnizione without ring

MOLLE - SPRINGS			
Inizio apertura (bar) Cracking pressure (bar)		Codice ordinazione Ordering code	
8		03.51.01.051	

ATTACCHI / PORT SIZE	
V1 - V2 - C1 - C2	
1/4 BSPP	