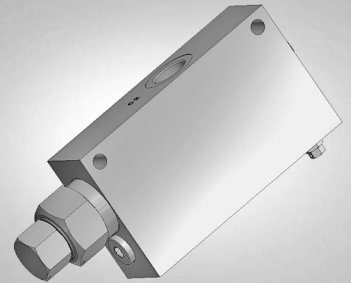
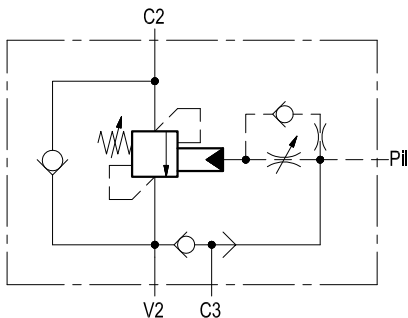


Single counterbalance with brake release port for winches



A-VBSO-SE-LA-42

08.37.70 - X - Y - Z



Description

When pressure at V2 rises above the spring bias pressure, the check seat is pushed away from the piston and flow is allowed from V2 to C2. When load pressure at C2 rises above the pressure setting, the direct operated, differential area, relief function is activated and flow is relieved from C2 to V2. With pilot pressure at Pil, the pressure setting is reduced in proportion to the stated ratio of the valve, until opening and allowing flow from C2 to V2. The spring chamber is drained to V2, and any back-pressure at V2 is additive to the pressure setting in all functions. Through port C3, an incorporated shuttle valve directs either Pil or V2 line pressure to the spring actuated brake for brake opening.

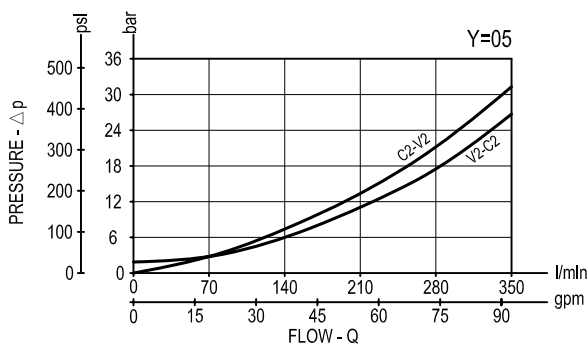
Technical data

Hydraulic

Max. operating pressure	bar (psi)	350 (5000)
Max. flow	l/min (gpm)	up to 350 (93)

The high pilot ratio (13:1) has been developed for energy saving; for higher stability at all flows and pressures, the pilot line includes hydraulic damping. Relief setting: at least 1.3 times the highest expected load. In addition, both the relief setting and the pilot ratio must be determined also in order to achieve building-up of pilot pressure in Pil high enough to release the brake prior to any valve opening from C2 to V2.

Performance

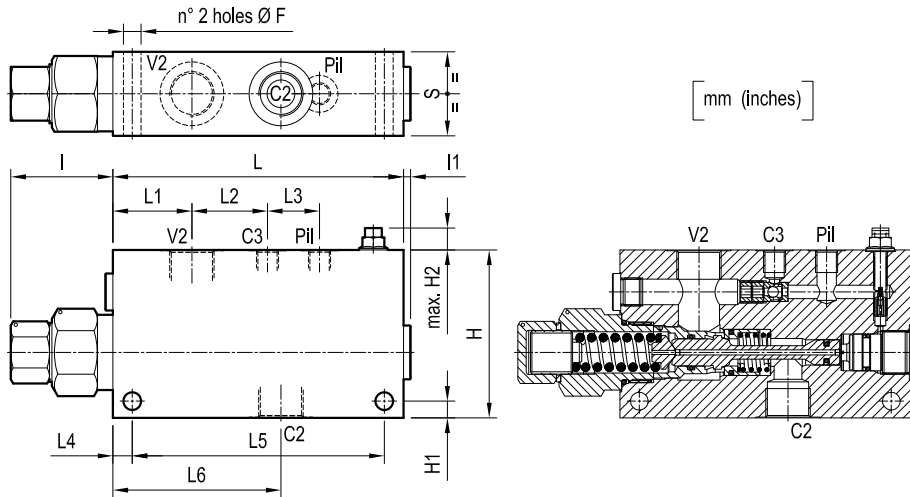


General

Manifold material		Steel
Weight		see "Dimensions"
Fluid temperature range	°C (°F)	between -30 (-22) and +100 (212)
Other technical data		see data sheet RE 18350-50

Note: for applications outside these parameters, please consult us.

Dimensions



50 (1.97)	100 (3.94)	150 (5.91)	11.5 (0.45)	31 (1.22)	45 (1.77)	47 (1.85)	173 (6.81)	18.5 (0.73)	10 (0.39)	109 (4.29)	4.5 (0.18)	61 (2.4)	10.5 (0.41)		G 1	6.7 (14.8)
50 (1.97)	100 (3.94)	150 (5.91)	11.5 (0.45)	31 (1.22)	45 (1.77)	47 (1.85)	173 (6.81)	19.5 (0.77)	10 (0.39)	99 (3.9)	4.5 (0.18)	61 (2.4)	10.5 (0.41)		G 3/4	6 (13.2)
S	L6	L5	L4	L3	L2	L1	L	H2	H1	H	I1	I	F		Y	Weight kg (lbs)

Ordering code

08.37.70 X Y Z

Single counterbalance
with brake release port for winches

Pilot ratio

= 13 13:1

Port sizes

V2-C2

C3-Pil

= 04

G 3/4

G 1/4

= 05

G 1

G 1/4

SPRINGS

Adj. pressure
range
bar (psi)

Pres. increase
bar/turn
(psi/turn)

Std. setting
Q=5 (l/min.)
bar (psi)

= 35

250-500
(3600-7250)

102
(1479)

500
(7250)

Type	Material number
08377013043500A	R930006597
08377013053500A	R930006596

Type	Material number